



M105 SERIES

Linear T8 Fluorescent Wrap-Around Luminaire

Fixture Type: _____

Job Information: _____

SPECIFICATIONS:

- Low profile linear fluorescent wrap-around type luminaire featuring a crystal clear acrylic prismatic diffuser. Provides high performance, excellent brightness control and broad angle illumination.
- Use for commercial, retail, and classroom general area lighting applications. Use in residential and multi-family dwellings.
- Two or four-lamp cross sections, T8 linear fluorescent.
- Length/Lamps: 2FT/17W-T8; 4FT/32W-T8.
- Ballasts: Full electronic instant start, normal light output, high power factor, THD less than 20%. Up to 4-lamps per ballast is standard. Optional performances: rapid start circuit, high light output, low-watt, THD less than 10%. Lutron or Advance dimming ballasts as specified. Not all optional ballasts available for every lamp type. Dedicated voltages are 120V-60HZ or 277V-60HZ. Multi-volt is optional and operates 120V-277V 50HZ-60HZ.
- Emergency battery back up: Integrated pack for 550, 700, 1300, or 1400 lumen output.
- Housings: Die formed code gauge cold rolled steel. End plates permanently riveted onto housing. Wireway cover snaps into and out of the housing without tools. Sufficient knockouts provided on fixture back and ends make installations easy. Baked white enamel finish provides minimum reflectivity of 87%.
- Sockets: 1/4 twist bi-pin.
- UL listed 1598 with CUL approval and bears their label. Suitable for dry locations or optional damp locations with UL Damp Label. Union made and labeled.



M105 SERIES Linear T8 Fluorescent Wrap-Around Luminaire

Fixture Type:

Job Information:

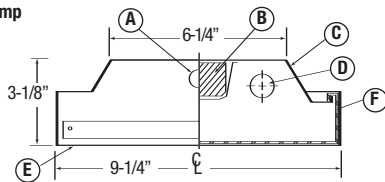
ORDERING DATA: Fill in boxes below with corresponding bold options.

Example: M105-232-OCT-A-ELB-120V

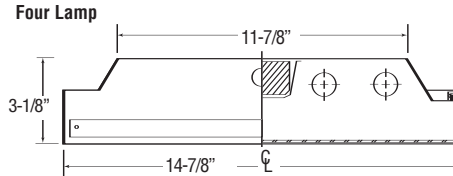
Series	No. of Lamps Cross	Lamp Wattage/Ea./ Fixture Length	Lamp Type	Diffuser	Ballast Type	Voltage	Misc.
M105 Fluorescent Wrap-Around Luminaire	2 Lamps 4 Lamps	17 17W-T8-24"L 32 32W-T8-48"L	OCT Octron T8	A Acrylic Prismatic Diffuser	ELB Electronic Instant Start, Up to 4-Lamps/Ballast ELB-HP Electronic Instant Start <10% THD, Up to 4-Lamps/Ballast ELBL Electronic Instant Start Low Watt, Up to 4-Lamps/Ballast ELBH Electronic Instant Start High Light Output, Up to 4-Lamps/Ballast ELBS Electronic Rapid Start <10% THD, Up to 4-Lamps/Ballast ELBD Electronic Dimming <10% THD, Up to 4-Lamps/Ballast	120V 120V-60HZ 277V 277V-60HZ UNI Universal Voltage, Multi-Volt <10% THD, 120V-277V 50HZ-60HZ	EMPK I-32 or Equal 550 Lumens, One 2-4Ft Lamp EMPKA I-48 or Equal 700 Lumens, One or Two 2-4Ft Lamps EMPKS I-320 or Equal 1350 Lumens, One or Two 2-4Ft Lamps EMPKT I-232 or Equal 1400 Lumens, One or Two 2-4Ft Lamps

DIMENSIONAL DATA/CROSS SECTION:

Two Lamp



Four Lamp



- A = 7/8" End K.O.
- B = Ballast
- C = Housing
- D = Lamps (Others)
- E = End Plate
- F = Diffuser
- G = Optional Optical Reflector

