

M108 SERIES

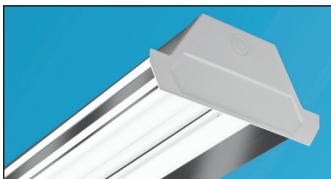
Linear T5 or T8 Fluorescent Small Profile Wrap Luminaire

Fixture Type: _____

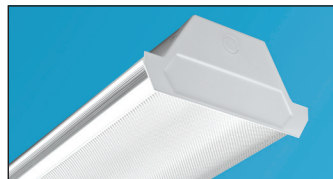
Job Information: _____

SPECIFICATIONS:

- Uniquely designed small profile linear T5 or T8 fluorescent luminaire originally developed for the energy management market. Features a computer designed optical reflector for peak performance. A crystal clear acrylic prismatic diffuser wraps around the light source.
- Applications: Schools, hospitals, office complexes, retail and other commercial type environments. Use in multi-family dwellings as well as all residential environments. Provides high performance, excellent brightness control, and broad angle illumination.
- Lamps: Utilizes all linear T5, T5-HO, and T8 fluorescent lamps. One, two, or three-lamp cross sections.
- Lengths/Lamps: 2FT., 3FT., 4FT., and 8FT. modules. Tandem 4FT. lamps on 8FT module.
- Housings: Fabricated from code grade cold rolled steel with ample bends for uniformity and strength. Design embossed end plates are riveted onto housing. Reflectors are mechanically fastened to the inside of the housing serving as the wireway cover and providing easy access to wiring trough. All steel parts are finished with a high quality white enamel paint.
- Optical reflectors: Reflectors are CAD designed for optimal reflective performance. Fabricated from Miro-4 enhanced specular aluminum with a 95% reflectivity. A flat painted white steel cover/reflector with an 87% reflectivity is optional.
- Diffusers: Extruded from 100% clear virgin acrylic plastic with an evenly spaced pattern of conical prisms on the bottom panel and sharp linear prisms on the interior side panels. Provides optimum brightness control and light transmission. Diffusers hinge down from either side for easy maintenance. All 8FT. modules use two individual 4FT. diffusers.
- Ballasts T8: Electronic instant start, normal light output, high power factor, THD less than 10% most ballast/lamp combinations. Multi-volt operates a range from 120V-277V, 50HZ-60HZ. Optional T8 performances: rapid start circuit, high light output, low-watt. Up to 4-lamps per ballast is standard. Lutron or Advance dimming ballasts in dedicated voltage as specified.
- Ballasts T5: Electronic programmed start, normal light output, high power factor, THD less than 10% most ballast/lamp combinations. Multi-volt operates a range from 120V-277V, 50HZ-60HZ. Lutron or Advance dimming ballasts in dedicated voltage as specified.
- Optional wiring: Two ballasts for dual circuitry.
- Emergency battery back up: Integrated pack ranges from 500-lumen output up to 1400 lumens.
- Installations: Suitable for individual or continuous row mounting. May be surface mounted or suspended on stems, cables, or rods. Sufficient knockouts are provided.
- UL and CUL listed 1598 and bears their label. Suitable for dry locations or optional damp locations with UL Damp Label. Union made and labeled.



Reflector Detail



Detail



M108 SERIES Linear T5 or T8 Fluorescent Small Profile Wrap Luminaire

Fixture Type:

Job Information:

ORDERING DATA: Fill in boxes below with corresponding bold options.

Example: M108-232-OCT/8T-A-MRT-ELB-UNI-EMPK

Series	Number of Lamps Cross	Lamp Wattage/Ea./ Fixture Length	Lamp Type	Tandem Housing/ Fixture Length	Diffuser Type	Optical Reflector	Ballast Type	Voltage	Misc					
M108 Small Profile Wrap Luminaire	1 Lamp	T5 LAMPS	T5 Linear T5	Leave Blank for All 2Ft., 3Ft., 4Ft.	A Acrylic Prismatic Clear.	Leave Blank for No Optical Reflector. Flat Painted White Steel Cover/Reflector 87% Reflectivity.	ELB T5 Electronic Programmed Start <10%THD. (Most Ballast/Lamp Combinations). Up to 2-Lamps/Ballast.* * Except: 4-Lamp 54W-HO-T5.	UNI T5 Universal Voltage, Multi-Volt 120V-277V, 50HZ-60HZ.	EMPK/ISL28 ISL-28 or Equal 500 Lumens. One T5 Lamp.					
		14 14W-T5/24"								HO-T5 Linear High Output T5	/8T 96" Housing, 4Ft. Lamps In Tandem.	MRT Miro-4 95% Reflective Enhanced Specular Aluminum Reflector.	UNI T8 Universal Voltage, Multi-Volt 120V-277V, 50HZ-60HZ.	EMPK/ISL54 ISL-54 or Equal 825 Lumens. One T5 or HO-T5 Lamp.
		21 21W-T5/36"								OCT Linear T8			EMPK/ISL540 ISL-540 or Equal 1300 Lumens. One T5 or HO-T5 Lamp.	
	2 Lamps	28 28W-T5/48"	HIGH OUTPUT T5 LAMPS					120V T5 or T8 Dedicated Voltage 120V-60HZ.	EMPK/I32 I-32 or Equal 500 Lumens. One 28W-T5 or T8 Lamp.					
		24 24W-HO-T5/24"	24 24W-HO-T5/24"				ELB T8 Electronic Instant Start. Up to 4-Lamps/Ballast.	277V T5 or T8 Dedicated Voltage 277V-60HZ.	EMPK/I32 I-32 or Equal 500 Lumens. One 28W-T5 or T8 Lamp.					
		39 39W-HO-T5/36"	39 39W-HO-T5/36"				ELBL T8 Electronic Instant Start Low Watt. Up to 4-Lamps/Ballast.		EMPK/I48 I-48 or Equal 700 Lumens. One or Two T8 Lamps.					
	3 Lamps	54 54W-HO-T5/48"	54 54W-HO-T5/48"				ELBH T8 Electronic Instant Start High Light Output. Up to 4-Lamps/Ballast.		EMPK/I320 I-320 or Equal 1350 Lumens. One T5 or HO-T5 Lamp, One or Two T8 Lamps.					
		T8 LAMPS	17 17W-T8/24"				ELBS T8 Electronic Rapid Start. Up to 4-Lamps/Ballast.		EMPK/I232 I-232 or Equal 1400 Lumens. Two T8 Lamps.					
		25 25W-T8/36"	25 25W-T8/36"				ELBD T5 or T8 Electronic Dimming, Lutron or Advance as Specified. Up to 3-Lamps/Ballast.		2B Two Ballasts For Dual Circuits.					
			32 32W-T8/48"				ELB-__ T5 or T8 Electronic As Specified.		DL UL Damp Label.					

PHOTOMETRICS:

Reports available upon request.

DIMENSIONAL DATA/CROSS SECTIONS:

