

# MP12 SERIES

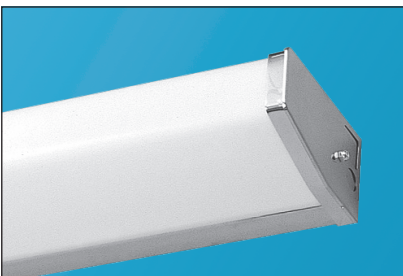
## Bath and Utility Luminaire Linear T8 Fluorescent

Fixture Type: \_\_\_\_\_

Job Information: \_\_\_\_\_  
\_\_\_\_\_  
\_\_\_\_\_

### SPECIFICATIONS:

- Linear T8 fluorescent wall luminaire designed for bath and vanity lighting and general-purpose utility lighting demands. A contemporary designed smooth white diffuser surrounds the light source with a soft attractive appearance while providing smooth glare free illumination. The highly polished chrome finish expresses a sense of luxury and cleanliness, important elements for baths and vanities. The white enamel finish may be best suited for utility lighting needs.
- Applications: Residential baths and vanities, multi-family housing, public restrooms, stairwells, and utility rooms and closets.
- Lamping: One or two-lamp cross sections, linear T8 fluorescent.
- Length/Lamps: 2FT/17W-T8; 3FT/25W-T8; 4FT/32W-T8. On request, 1.5FT/15W-T8 or T12.
- Housings: Die formed from code grade cold rolled steel with galvanized steel ends riveted into place. An internal white enamel ballast cover/reflector is easily removed for wiring access. One-piece end caps secure the diffuser while closing off the entire fixture. Back knockout cluster for direct attachment to a recessed junction box. Finished with a highly polished chrome or white enamel paint. Optional finishes on request.
- Diffusers: A one-piece smooth white diffuser is extruded from 100% virgin acrylic material for high performance, durability, and long lasting service. Permits maximum light transmission while offering total lamp obscurity.
- Ballasts: Electronic instant start, normal light output, high power factor, THD less than 10% most ballast/lamp combinations. Optional T8 performances: rapid start circuit, high light output, low-watt. Multi-volt operates a range from 120V-277V, 50HZ-60HZ.
- Switching & electrical options: All options 120V only. Pull chain switch, rotary switch, and grounded 3-wire outlet.
- Emergency battery back up: Integrated pack ranges from 500-lumen output up to 1400 lumens for 3Ft. and 4Ft. units. Varies with lamp type. Contact factory for 2Ft. units.
- Installations: Suitable for horizontal wall mounting. May be mounted continuously with available joiner band. Contact factory with row information for proper field set up.
- UL and CUL listed 1598 and bears their label. Suitable for dry locations or optional damp locations with UL Damp Label. Union made and labeled.



Detail



# MP12 SERIES Bath and Utility Luminaire Linear T8 Fluorescent

Fixture Type: \_\_\_\_\_

Job Information: \_\_\_\_\_

**ORDERING DATA:** Fill in boxes below with corresponding bold options.

Example: MP12-232-OCT-A-WHT-PC-ELB-120V

Series	No. of Lamps Cross	Lamp Wattage/Ea./Nom. Fixture Length	Lamp Type	Diffuser Type	Optional Finish	Optional Electrical Accessory	Ballast Type	Voltage	Misc
MP12	<div style="border: 1px solid black; padding: 2px;">1 Lamp</div> <div style="border: 1px solid black; padding: 2px;">2 Lamps</div>	<div style="border: 1px solid black; padding: 2px;">17 17W-T8-2FT.</div> <div style="border: 1px solid black; padding: 2px;">25 25W-T8-3FT.</div> <div style="border: 1px solid black; padding: 2px;">32 32W-T8-4FT.</div>	<div style="border: 1px solid black; padding: 2px;">OCT Octron T8</div>	<div style="border: 1px solid black; padding: 2px;">A Acrylic Smooth White</div>	<div style="border: 1px solid black; padding: 2px;">Leave blank for Polished Chrome.</div> <div style="border: 1px solid black; padding: 2px;">WHT White</div>	<div style="border: 1px solid black; padding: 2px;">Leave blank for No Option.</div> <div style="border: 1px solid black; padding: 2px;">PC Single Circuit Pull Chain Switch. 120V Only.</div> <div style="border: 1px solid black; padding: 2px;">PS Rotary Switch. 120V Only.</div> <div style="border: 1px solid black; padding: 2px;">UG Grounded Outlet. 120V Only.</div>	<div style="border: 1px solid black; padding: 2px;">ELB T8 Electronic Instant Start.</div> <div style="border: 1px solid black; padding: 2px;">ELBL T8 Electronic Instant Start Low Watt.</div> <div style="border: 1px solid black; padding: 2px;">ELBH T8 Electronic Instant Start High Light Output.</div> <div style="border: 1px solid black; padding: 2px;">ELBS T8 Electronic Rapid Start.</div> <div style="border: 1px solid black; padding: 2px;">ELBD Electronic Dimming, Lutron or Advance as Specified.</div> <div style="border: 1px solid black; padding: 2px;">ELB- Electronic As Specified.</div>	<div style="border: 1px solid black; padding: 2px;">UNI Universal Voltage, Multi-Volt 120V-277V, 50HZ-60HZ.</div> <div style="border: 1px solid black; padding: 2px;">120V 120V-60HZ.</div> <div style="border: 1px solid black; padding: 2px;">277V 277V-60HZ.</div>	<div style="border: 1px solid black; padding: 2px;">EMPK/I32 I-32 or Equal 500 Lumens. One 25W-T8 or 32W-T8 Lamp.</div> <div style="border: 1px solid black; padding: 2px;">EMPK/I48 I-48 or Equal 700 Lumens. One or Two 25W-T8 or 32W-T8 Lamps.</div> <div style="border: 1px solid black; padding: 2px;">EMPK/I320 I-320 or Equal 1350 Lumens. One or Two 25W-T8 or 32W-T8 Lamps.</div> <div style="border: 1px solid black; padding: 2px;">EMPK/I232 I-232 or Equal 1400 Lumens. Two 25W-T8 or 32W-T8 Lamps.</div> <div style="border: 1px solid black; padding: 2px;">DL UL Damp Label.</div>

**ACCESSORIES: (Order Separately)**

CAT#	Description
JB12C	Joiner Band/Chrome/MP12 Must contact factory with row information for proper field set up.
JB12W	Joiner Band/White/MP12 Must contact factory with row information for proper field set up.
APC	5-1/4" Round Adapter Plate-Chrome
APW	5-1/4" Round Adapter Plate-White

**PHOTOMETRICS:**

Other reports available upon request.

**DIMENSIONAL DATA/CROSS SECTION:**

