

# ZENITH Q ZQ SERIES

## 4X4 Four-Sided Light Shield Indirect/Direct Luminaire

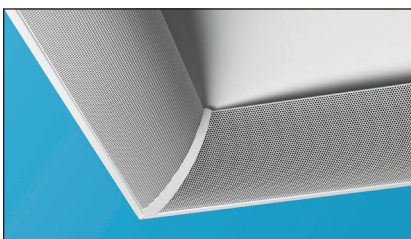


Fixture Type: \_\_\_\_\_

Job Information: \_\_\_\_\_  
\_\_\_\_\_  
\_\_\_\_\_

### SPECIFICATIONS:

- Recessed 4X4 indirect/direct fluorescent luminaire featuring a four-sided perforated light shield, which surrounds a sculptured domed style, arched reflector. A bold architectural element that creates the sense loft and openness, heightening and brightening the space.
- This computer designed precision optical system provides indirect/direct illumination. The optically correct dome reflector enables precise indirect light distribution, while the four-sided perforated light shield provides the soft direct illumination.
- The system delivers comfortable illumination by filling the entire volume of space evenly. Broad angle illumination lights walls and vertical surfaces creating a more open and comfortable space.
- All components are recessed above the ceiling line. Install in ceilings as low as eight feet.
- Housings are die formed from 20GA cold rolled steel and fabricated in a computer-controlled operation. Spot-welds or rivets hold all parts together for strength and unity. Pry-out style grid supports are located on the sides.
- The indirect reflector, CAD designed to the optimum shape, is a seamless one-piece spun dome screwed into the housing with hidden hardware.
- The four-sided light shield assembly is fabricated from heavy gauge perforated steel and integrated with internal white Mylar panels. Extruded corner pieces hold the assembly together and offer a clean transition from side-to-side. Four spring hooks allow entire assembly to drop down for easy lamp access.
- A custom formulated non-glare white powder coating is applied to the reflector, light shield, and the housing after fabrication. Provides a reflectivity of at least 90%.
- T5 Lamps: Four linear lamps: 28W-T5 or 54W-HO-T5.
- TT5 Lamps: Eight twin-tube compact lamps: 40W-TT5, 50W-TT5, or 55W-TT5.
- Ballasts T5: Electronic programmed start, normal light output, high power factor, THD less than 10% most ballast/lamp combinations. Up to 2-lamps per 28W ballast, up to 4-lamps per 54W ballast. Multi-volt operates a range from 120V-277V, 50HZ-60HZ. Lutron or Advance dimming ballasts as specified.
- Ballasts TT5: Electronic instant start, normal light output, high power factor, THD less than 10% most ballast/lamp combinations. Up to 2-lamps per 40W ballast, up to 4-lamps per 50W and 55W ballasts. Multi-volt operates a range from 120V-277V, 50HZ-60HZ. Optional TT5 performances: rapid start circuit. Lutron or Advance dimming ballasts as specified.
- Emergency battery back up: Integrated packs range from 500-lumen output up to 1600 lumen output. Varies with lamp type.
- A quick wiring access plate is located on back of the housing. Additional knockouts provided. Factory installed lamps and power whips as specified.
- Designed for installation into NEMA Type G lay-in acoustical grid ceiling systems, 1" grid or 9/16" fine-line grid. Optional fit available for screw slot grid. For NEMA Type F dry wall applications an additional flange kit must be used with Type G housing. Four pullout type security clips, located in the housing, lock over the ceiling grid work. Four auxiliary suspension points are also provided for securing to building structure.
- UL and CUL listed 1598 and bears their label. Suitable for dry locations or optional damp locations with UL Damp Label Union made and labeled.



Shield Detail



# ZQ SERIES 4X4 Four-Sided Light Shield Indirect/Direct Luminaire

Fixture Type:

Job Information:

**ORDERING DATA:** Fill in boxes below with corresponding bold options.

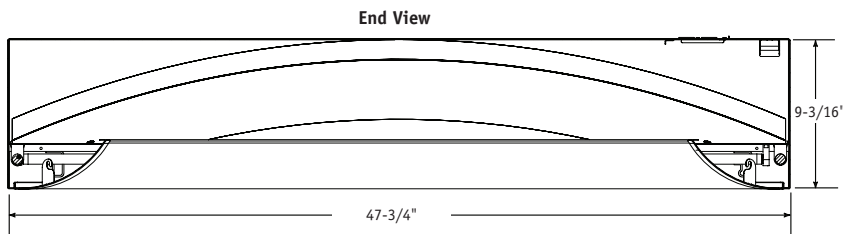
Example: ZQ-44G-454-HO-T5-ELB-UNI-EMPK/I320-FLX

Series	Module Size/Ceiling	No. of Lamps/ Wattage Ea. Lamp	Lamp Type	Ballast Type	Voltage	Misc.
<b>ZQ</b> Zenith Q Four-Sided Light Shield	<b>44G</b> 4X4 Module/ NEMA Type G/ Lay-in Grid, 1" or 9/16" Fine Line.  <b>44S</b> 4X4 Module/ NEMA Type G/ Lay-in Grid, 9/16" Screw-Slot/ Bolt-Slot.	<b>840</b> 8-40W-TT5 Compact  <b>850</b> 8-50W-TT5 Compact  <b>855</b> 8-55W-TT5 Compact  <b>428</b> 4-28W-T5 Linear  <b>454</b> 4-54W-HO-T5 Linear	<b>BIAX</b> Twin Tube Compact TT5  <b>T5</b> Linear T5  <b>HO-T5</b> Linear High Output T5	<b>ELB</b> TT5 Electronic Instant Start. Up to 2-Lamps/40W Ballast. Up to 4-Lamps/50W or 55W Ballast.  <b>ELBS</b> TT5 Electronic Rapid Start. Up to 2-Lamps/40W Ballast.  <b>ELB</b> T5 Electronic Programmed Start. Up to 2-Lamps/28W Ballast. Up to 4-Lamps/54W Ballast.  <b>ELBD</b> T5 or TT5 Electronic Dimming, Lutron or Advance as Specified.  <b>ELB-__</b> T5 or TT5 Electronic As Specified.	<b>UNI</b> Universal Voltage, Multi-Volt 120V-277V, 50HZ-60HZ.  <b>120V</b> 120V-60HZ as Needed.  <b>277V</b> 277V-60HZ as Needed.	<b>EMPK/I32</b> I-32 or Equal 450 Lumens. One 40W-TT5 Lamp.  <b>EMPK/I48</b> I-48 or Equal 650 Lumens. One 40W-TT5, 50W-TT5, or 55W-TT5 Lamp.  <b>EMPK/I320</b> I-320 or Equal 1100 Lumens. One 40W-TT5, 50W-TT5, or 55W-TT5 Lamp. One 14W-T5 or 24W-HO-T5 Lamp.  <b>EMPK/ISL28</b> ISL-28 or Equal 500 Lumens. One 14W-T5 or 24W-HO-T5 Lamp.  <b>EMPK/ISL54</b> ISL-54 or Equal 825 Lumens. One 28W-T5 or 54W-HO-T5 Lamp.  <b>EMPK/ISL540</b> ISL-540 or Equal 1300 Lumens. One 28W-T5 or 54W-HO-T5 Lamp.  <b>FLX</b> 6Ft. Single Circuit Power Flex. (Specify Voltage).  <b>FLX2</b> 6Ft. 2-Circuit Power Flex. (Specify Voltage).  <b>2B</b> 2-Ballasts, 2-Circuits.  <b>DL</b> UL Damp Label.
<b>FK-44</b> 4X4 Flange Kit/ For NEMA Type F Applications. Order Separately. For Dry Wall Installations. Use with "G" Type Fixture.						

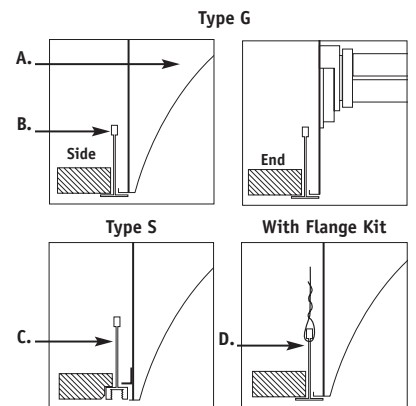
## PHOTOMETRICS:

Reports available upon request.

## CROSS SECTIONS:



## CEILING DETAIL:



Use Type G Fixture  
Cut Out: 24-3/16" x 24-3/8"

- A. Housing
- B. Type G Grid
- C. Type S Grid
- D. Flange Kit

