



MB SERIES

Linear T5 1-Lamp Fluorescent Miniature Profile Strip Luminaire

Fixture Type: _____

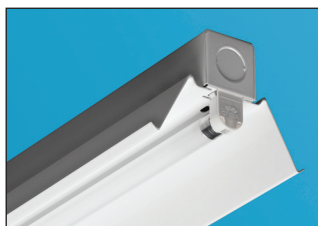
Job Information: _____

SPECIFICATIONS:

- Miniature profile linear fluorescent open lamp strip designed for high efficient T5 or HO-T5 lamp and ballast technologies.
- Applications: Smaller size affords greater design flexibility. Generally specified for direct or indirect cove and valence lighting in combination with all types of architectural details. Displays and cabinets are evenly illuminated with the miniature linear design. Directional reflectors provide shielding and optical control.
- Lamps: Utilizes all linear T5 and HO-T5 fluorescent lamps. One-lamp cross section.
- Lengths/Lamps: 2Ft/14W-T5 or 24W-HO-T5; 3Ft/21W-T5 or 39W-HO-T5; 4Ft/28W-T5 or 54W-HO-T5; 5Ft/35W-T5 or 80W-HO-T5; 6Ft/21W-T5 or 39W-HO-T5 tandem lamps; 8Ft/28W-T5 or 54W-HO-T5 tandem lamps. Other T5 lamps as specified.
- Ballasts T5 and HO-T5: Electronic programmed start, normal light output, high power factor. THD less than 10% most ballast/lamp combinations. End-of-life safety shut down feature. Multi-volt operates a range from 120V-277V, 50HZ-60HZ. Lutron or Advance dimming ballasts as specified. Other performance ballasts as specified.
- Optional wiring: Single or dual circuit quick connect plug through wiring harnesses. Master-slave wiring.
- Emergency battery back up: Integrated pack ranges from 500-lumen output up to 1300 lumens. Varies with lamp type.
- Housing: Unitized housing from heavy gauge cold rolled steel. Welded ends and socket bars. Screw-down covers easily go in or out from tight spots. Easy install snap-in sockets for fast installation. Sufficient knockouts provided on fixture back and ends. Baked enamel finish provides minimum reflectivity of 87%.
- Sockets: Miniature T5 quarter-turn bi-pin rotary locking type.
- Optional shielding and directional reflectors: Asymmetric, symmetric, and direct-light designs. White enamel steel finish or Miro-4 or equal enhanced specular aluminum with a 95% reflectivity. Custom shapes available.
- Optional accessories: Ship separately; Wire guards. Wired-in; GLR or GMF fusing, 120V 18/3-SJT cord and plug set.
- UL and CUL listed 1598 and bears their label. Suitable for dry locations or optional damp locations with UL Damp Label. Union made and labeled.



Asymmetric



Symmetric



Direct Light



MB SERIES Linear T5 1-Lamp Fluorescent Miniature Profile Strip Luminaire

Fixture Type:

Job Information:

ORDERING DATA: Fill in boxes below with corresponding bold options.

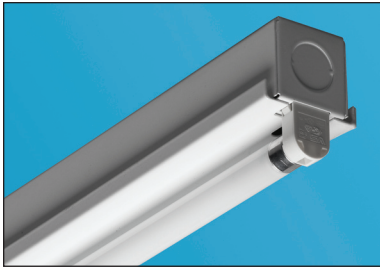
Example: MB-154-H0-T5/8T-ELB-UNI-EMP/ISL54

Series	No. of Lamps Cross	Lamp Wattage/Ea./ Fixture Length/(Nom.)	Lamp Type	Tandem Housing/ Fixture Length/(Nom.)	Ballast Type	Voltage	Misc
MB Miniature Profile T5 Strip	1 Lamp	T5 LAMPS 14 14W-T5/22-7/16"L. (2Ft.) 21 21W-T5/34-1/4"L. (3Ft.) 28 28W-T5/46"L. (4Ft.) 35 35W-T5/57-7/8"L. (5Ft.) H0-T5 Lamps 24 24W-H0-T5/22-7/16"L. (2Ft.) 39 39W-H0-T5/34-1/4"L. (3Ft.) 54 54W-H0-T5/46"L. (4Ft.) 80 80W-H0-T5/57-7/8"L. (5Ft.) As Specified, Other T5 Lamps.	T5 Linear T5 H0-T5 Linear H0-T5	Leave Blank for All Nom. 2Ft., 3Ft., 4Ft., 5Ft. /6T 68-1/2"L (6Ft.) Housing, 2-3Ft. Lamps in Tandem. /8T 92"L (8Ft.) Housing, 2-4Ft. Lamps in Tandem.	ELB T5 or H0-T5 Electronic Programmed Start. ELBD T5 or H0-T5 Electronic Dimming. Lutron or Advance as Specified. ELB- T5 or H0-T5 Electronic As Specified.	UNI T5 or H0-T5 Universal Voltage. Multi-Volt 120V-277V, 50HZ-60HZ. 120V T5 or H0-T5 Dedicated Voltage 120V-60HZ. 277V T5 or H0-T5 Dedicated Voltage 277V-60HZ.	EMP/ISL28 ISL-28 or Equal 500 Lumens. One T5 Lamp. EMP/ISL54 ISL-54 or Equal 825 Lumens. One T5 or H0-T5 Lamp. EMP/ISL540 ISL-540 or Equal 1300 Lumens. One T5 or H0-T5 Lamp. P1 Single Circuit Plug Thru. Specify Voltage. P2 Dual Circuit Plug Thru. Specify Voltage. 18/3CP 120V 18/3 SJT Cord & Plug Set/Others on Request. GLR/_A Fast Action Fusing. _A Amperage TBD. GMF/_A Slow Action Fusing. _A Amperage TBD. DL UL Damp Label.

REFLECTORS & WIRE GUARDS: (Order Separately)

Example: MBR-128/54-A
(Use 2 Each For 6ft & 8ft Fixtures)

Series	No. of Lamps Cross	Lamp Wattage/Ea./ Reflector Length	Shape (Reflectors Only)
MBR White Steel MRC-MBR Enhanced Spec Alum 95% Reflectivity WG-MB Wire Guard	1 MBR-1-Lamp Hsg	14/24 22-7/16"L (2FT) 21/39 34-1/4"L (3FT) 28/54 46"L (4FT) 35/80 57-7/8"L (5ft)	A Asymmetric S Symmetric D Direct-Light C Custom



End Detail

PHOTOMETRICS:

Reports available upon request.

DIMENSIONAL DATA/CROSS SECTIONS:

