



# M106 SERIES

## Linear T5 or T8 Fluorescent Shallow Wrap Luminaire

Fixture Type: \_\_\_\_\_

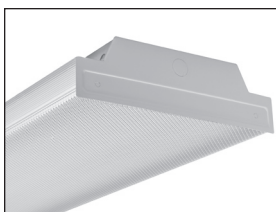
Job Information: \_\_\_\_\_

\_\_\_\_\_

\_\_\_\_\_

### SPECIFICATIONS:

- Low profile linear T5 or T8 fluorescent luminaire featuring a crystal clear acrylic prismatic diffuser that wraps around the light source.
- Applications: Schools, hospitals, office complexes, retail and other commercial type environments. Use in multi-family dwellings as well as all residential environments. Provides high performance, excellent brightness control, and broad angle illumination.
- Lamps: Utilizes all linear T5, T5-HO, T8, and T8-HO fluorescent lamps. Two, three, or four-lamp cross sections.
- Lengths/Lamps: 2FT., 3FT., 4FT., and 8FT. modules. Tandem 4FT. lamps or 8FT. lamps on 8FT module.
- Housings: Fabricated from code grade cold rolled steel with ample bends for uniformity and strength. Design embossed end plates are riveted onto housing. Wireway cover snaps into housing for easy maintenance. Finished with a high quality white enamel paint baked on to provide an 87% minimum reflectivity.
- Diffusers: Extruded from 100% clear virgin acrylic plastic with an evenly spaced pattern of conical prisms on the bottom panel and sharp linear prisms on the interior side panels. Provides optimum brightness control and light transmission. Diffusers hinge down from either side for easy maintenance. All 8FT. modules use two individual 4FT. diffusers.
- Optional diffusers: A .125" thick version of the standard diffuser or an acrylic smooth white version without prisms.
- Optional reflectors: Optical reflectors are CAD designed for optimal reflective performance. Fabricated from Miro-4 enhanced specular aluminum with a 95% reflectivity.
- Ballasts T8: Electronic instant start, normal light output, high power factor, THD less than 10% most ballast/lamp combinations. Multi-volt operates a range from 120V-277V, 50HZ-60HZ. Optional T8 performances: rapid start circuit, high light output, low-watt. Up to 4-lamps per ballast is standard. Lutron or Advance dimming ballasts in dedicated voltage as specified.
- Ballasts T5: Electronic programmed start, normal light output, high power factor, THD less than 10% most ballast/lamp combinations. Multi-volt operates a range from 120V-277V, 50HZ-60HZ. Lutron or Advance dimming ballasts in dedicated voltage as specified.
- Optional wiring: Two ballasts for dual circuitry.
- Emergency battery back up: Integrated pack ranges from 500-lumen output up to 1400 lumens. Varies with lamp type.
- Installations: Suitable for individual or continuous row mounting. May be surface mounted or suspended on stems, cables, or rods.
- UL and CUL listed 1598 and bears their label. Suitable for dry locations or optional damp locations with UL Damp Label. Union made and labeled.



Two Lamp Detail



Four Lamp Detail



# M106 SERIES Linear T5 or T8 Fluorescent Shallow Wrap Luminaire

Fixture Type:

Job Information:

**ORDERING DATA:** Fill in boxes below with corresponding bold options.

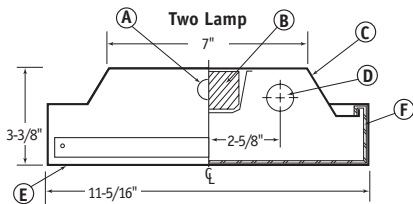
Example: M106-232-OCT/8T-A-MRT-ELB-UNI-EMPk OR M106-254-HO-T5/8T-A-MRT-ELB-UNI-EMPk OR M106-286-HO-OCT-A-ELB-UNI-EMPk

Series	Number of Lamps Cross	Lamp Wattage/Ea./ Fixture Length	Lamp Type	Tandem Housing/ Fixture Length	Diffuser Type	Optional Optical Reflector	Ballast Type	Voltage	Misc.
<b>M106</b> Linear T5 or T8 Fluorescent Shallow Wrap Luminaire.	2 Lamps 3 Lamps 4 Lamps	<b>T5 LAMPS</b>	<b>T5</b> Linear T5 <b>HO-T5</b> Linear High Output T5 <b>OCT</b> Linear T8 <b>HO-OCT</b> Linear High Output T8	Leave Blank for all 2Ft., 3Ft., 4Ft.  Leave Blank for 8Ft. with 8Ft. Lamps  <b>/8T</b> 96" Housing, 4Ft. Lamps In Tandem.	<b>A</b> Acrylic Prismatic Clear.  <b>A.125</b> Acrylic Prismatic Clear/.125".  <b>ASW</b> Acrylic Smooth White.	Leave Blank for No Reflector. Standard 87% Reflective Steel Housing.  <b>MRT</b> Miro-4 95% Reflective Enhanced Specular Aluminum Reflector.	<b>ELB</b> T5 Electronic Programmed Start <10%THD. (Most Ballast/Lamp Combinations). Up to 2-Lamps/Ballast.* * Except: 4-Lamp 54W-HO-T5.  <b>ELB</b> T8 Electronic Instant Start. Up to 4-Lamps/Ballast.  <b>ELBL</b> T8 Electronic Instant Start Low Watt. Up to 4-Lamps/Ballast.  <b>ELBH</b> T8 Electronic Instant Start High Light Output. Up to 4-Lamps/Ballast.  <b>ELBS</b> T8 Electronic Rapid Start. Up to 4-Lamps/Ballast.  <b>ELBD</b> T5 or T8 Electronic Dimming, Lutron or Advance as Specified. Up to 2-Lamps/Ballast.  <b>ELB-</b> T5 or T8 Electronic As Specified.	<b>UNI</b> T5 Universal Voltage, Multi-Volt 120V-277V, 50HZ-60HZ.  <b>UNI</b> T8 Universal Voltage, Multi-Volt 120V-277V, 50HZ-60HZ.  <b>120V</b> T5 or T8 Dedicated Voltage 120V-60HZ.  <b>277V</b> T5 or T8 Dedicated Voltage 277V-60HZ.	<b>EMPk/ISL28</b> ISL-28 or Equal 500 Lumens. One T5 Lamp.  <b>EMPk/ISL54</b> ISL-54 or Equal 825 Lumens. One T5 or HO-T5 Lamp.  <b>EMPk/ISL540</b> ISL-540 or Equal 1300 Lumens. One T5 or HO-T5 Lamp.  <b>EMPk/I32</b> I-32 or Equal 500 Lumens. One 28W-T5 or T8 Lamp.  <b>EMPk/I48</b> I-48 or Equal 700 Lumens. One or Two T8 Lamps. One 8ft. T8 Lamp.  <b>EMPk/I320</b> I-320 or Equal 1350 Lumens. One T5 or HO-T5 Lamp, One or Two T8 Lamps.  <b>EMPk/I232</b> I-232 or Equal 1400 Lumens. Two T8 Lamps.  <b>4LH</b> Specifies 2-Lamp Cross Section on 4-Lamp Wide Housing.  <b>2B</b> Two Ballasts For Dual Circuits.  <b>DL</b> UL Lamp Label.
		<b>14</b> 14W-T5/24"							
		<b>21</b> 21W-T5/36"							
	<b>28</b> 28W-T5/48"								
	<b>HIGH OUPUT T5 LAMPS</b>								
	<b>24</b> 24W-HO-T5/24"								
	<b>39</b> 39W-HO-T5/36"								
	<b>54</b> 54W-HO-T5/48"								
	<b>T8 LAMPS</b>								
	<b>17</b> 17W-T8/24"								
	<b>25</b> 25W-T8/36"								
	<b>32</b> 32W-T8/48"								
<b>59</b> 59W-T8/96"									
<b>HIGH OUTPUT T8 LAMPS</b>									
<b>44</b> 44W-HO-T8/48"									
<b>86</b> 86W-HO-T8/96"									

## PHOTOMETRICS:

Photometric reports available upon request.

## DIMENSIONAL DATA/CROSS SECTIONS:



- A = 7/8" End K.O.
- B = Ballast
- C = Housing
- D = Lamps (Others)
- E = End Plate
- F = Diffuser
- G = Optional Optical Reflector

