

# MM-C, MM-P SERIES

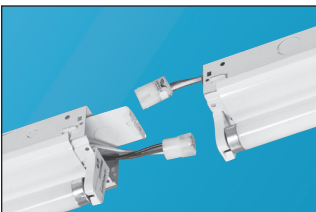
## Linear T8 1- or 2-Lamp Fluorescent Narrow Strip Luminaire

Fixture Type: \_\_\_\_\_

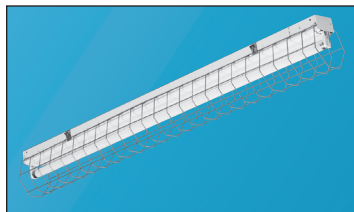
Job Information: \_\_\_\_\_  
\_\_\_\_\_  
\_\_\_\_\_

### SPECIFICATIONS:

- General-purpose 2.75" narrow linear T8 fluorescent open lamp strip. Multiple lamping and ballast choices. Directional reflectors, wire guards, and mounting accessories. Module lengths; 2Ft., 3Ft., 4Ft., 5Ft., 6Ft., and 8Ft.
- Applications: Use for all commercial, industrial, retail, and residential general area lighting applications. Also specified for direct and indirect cove and valence lighting in combination with all types of architectural details.
- Lamps: Utilizes all linear T8 bi-pin type fluorescent lamps. One or two-lamp cross sections.
- Lengths/Lamps: 2Ft/17W-T8; 3Ft/25W-T8; 4Ft/32W-T8; 5Ft/40W-T8; 6Ft/25W-T8 tandem lamps; 8Ft/32W-T8 tandem lamps. One-lamp cross 8Ft/59W-SL-T8. Other T8 lamps as specified.
- Ballasts T8: Electronic instant start, normal light output, high power factor. THD less than 10% most ballast/lamp combinations. Optional T8 performances: rapid start circuit, high light output, low-watt. Up to 4-lamps per ballast is standard. Multi-volt operates a range from 120V-277V, 50HZ-60HZ. Lutron or Advance dimming ballasts as specified.
- Optional wiring: Two ballasts for dual circuitry. Tandem-in-line wiring. Master-slave wiring. Single or dual circuit quick connect plug through wiring harnesses.
- Emergency battery back up: Integrated pack ranges from 500-lumen output up to 1400 lumens. Varies with lamp type.
- Housing: Die formed from code gauge cold rolled steel. End plates quickly convert to snap-in continuous row joiners for uninterrupted wireway. Easy install socket plates have snap-in action. Wireway covers snap on or off for easy installations and maintenance. Optional screw-down covers for tight coves or added security. NYC code 20GA housing has ends and socket plates securely riveted into place. Sufficient knockouts are provided on the back and ends for all electrical connections. Baked white enamel finish provides a minimum reflectivity of 87%.
- Sockets: 1/4 twist bi-pin or optional rotary locking type. Spring-loaded plunger type used for 59W-SL-T8 lamping.
- Installations: Suitable for individual or continuous row mounting. May be surface mounted or suspended on stems, cables, or rods.
- Optional reflectors: For shielding and directional light patterns; Asymmetric, symmetric, direct-light designs. White enamel steel finish or Miro-4 or equal enhanced specular aluminum with a 95% reflectivity. Custom shapes available.
- Optional accessories: Ship separately; Wire guards, V hangers, stem sets, cable sets. Wired-in; GLR or GMF fusing, 120V 18/3-SJT cord and plug set, 120V 16/3-SJT cord and NEMA L5-15P twist-lock plug set, 277V 16/3-SJT cord and NEMA L7-15P twist-lock plug set, various occupancy sensors.
- UL and CUL listed 1598 and bears their label. Suitable for dry locations or optional damp locations with UL Damp Label. Union made and labeled.



P1 or P2 Plug Thru  
Quick Connect Feature.  
(Shown with end plate  
as joiner)



Wire Guard



# MM-C, MM-P SERIES Linear T8 1- or 2-Lamp Fluorescent Narrow Strip Luminaire

## Fixture Type:

## Job Information:

### ORDERING DATA: Fill in boxes below with corresponding bold options.

Example: MM-132-OCT/8T-C-ELBL-UNI-EMPK/I32

Series	No. of Lamps Cross	Lamp Wattage/Ea./ Fixture Length	Lamp Type	Tandem Housing/ Fixture Length	Housing End Type	Ballast Type	Voltage	Misc.
<b>MM</b> 2.75" Narrow Housing.	<b>1</b> Lamp <b>2</b> Lamps. *Must Use C-2.75 or P-2.75 Housing End Type.	<b>17</b> 17W-T8-24"L. <b>25</b> 25W-T8-36"L. <b>32</b> 32W-T8-48"L. <b>40</b> 40W-T8-60"L. <b>59-SL</b> 59W-SL-T8-96"L. One-Lamp Only. *Must Use C-2.75 or P-2.75 Housing End Type.  As Specified, Other T8 Lamps.	<b>OCT</b> Octron T8	Leave Blank for All 2Ft., 3Ft., 4Ft., 5Ft. <b>/6T</b> 72" Housing, 3Ft. Lamps in Tandem. <b>/8T</b> 96" Housing, 4Ft. Lamps in Tandem.	<b>C</b> Combination End/Joiner. 1-Lamp Cross Sections. <b>C-2.75</b> Combination End/Joiner. 2.75" Wide. All 2-Lamp Cross Sections. <b>P</b> Riveted Ends. 20GA Housing. NYC Code. 1-Lamp Cross Sections. <b>P-2.75</b> Riveted Ends. 20GA Housing. NYC Code. 2.75" Wide. All 2-Lamp Cross Sections.	<b>ELB</b> T8 Electronic Instant Start. Up to 4-Lamps/Ballast. <b>ELBL</b> T8 Electronic Instant Start, Low Watt. Up to 4-Lamps/Ballast. <b>ELBH</b> T8 Electronic Instant Start, High Light Output. Up to 4-Lamps/Ballast. <b>ELBS</b> T8 Electronic Rapid Start. Up to 4-Lamps/Ballast. <b>ELBD</b> T8 Electronic Dimming, Lutron or Advance as Specified. Up to 2-Lamps/Ballast. <b>ELB-___</b> T8 Electronic As Specified.	<b>UNI</b> T8 Universal Voltage. Multi-Volt 120V-277V, 50HZ-60HZ. <b>120V</b> T8 Dedicated Voltage 120V-60HZ. <b>277V</b> T8 Dedicated Voltage 277V-60HZ.	<b>EMPK/I32</b> I-32 or Equal 500 Lumens. One T8 Lamp. <b>EMPK/I48</b> I-48 or Equal 700 Lumens. One or Two T8 Lamps. <b>EMPK/I320</b> I-320 or Equal 1350 Lumens. One or Two T8 Lamps. <b>EMPK/I232</b> I-232 or Equal 1400 Lumens. Two T8 Lamps. <b>2B</b> Two Ballasts For Dual Circuits. <b>LS</b> Locking Sockets. <b>P1</b> Single Circuit Plug Thru. Specify Voltage. <b>P2</b> Dual Circuit Plug Thru. Specify Voltage. <b>TILW</b> Tandem-in-Line Wiring. <b>OS</b> Leviton OSFHU or Equal Occupancy Sensor. 360 Degree Lens Installed. Aisle Way Pattern Included. Others as Specified. <b>18/3CP</b> 120V 18/3 SJT Cord & Plug Set/Others on Request. <b>16/3CTP</b> 120V 16/3 SJT Cord & NEMA L5-15P Twist-Lock Plug Set/Others on Request. <b>277-16/3CTP</b> 277V 16/3 SJT Cord & NEMA L7-15P Twist-Lock Plug Set/Others on Request. <b>GLR/_A</b> Fast Action Fusing. _A Amperage TBD. <b>GMF/_A</b> Slow Action Fusing. _A Amperage TBD. <b>DL</b> UL Damp Label. <b>SDC</b> Screw-Down Cover.

### REFLECTORS & WIRE GUARDS: (Order Separately)

Example: MMR-132-A  
Use 2 Each for 6ft. & 8ft. Fixtures

Series	No. of Lamps Cross	Lamp Wattage/Ea. Fixture Length	Shape (Reflector Only)
<b>MMR</b> White Steel <b>MRC-MM</b> Enhanced Spec Alum 95% Reflectivity <b>WG-MM</b> Wire Guard	<b>1</b> 2.75" Wide Hsg	<b>17</b> 24"L. <b>25</b> 36"L. <b>32</b> 48"L.	<b>A</b> Asymmetric <b>S</b> Symmetric <b>D</b> Direct-Light <b>C</b> Custom

### PHOTOMETRICS:

Reports available upon request.

### DIMENSIONAL DATA/CROSS SECTION:

